



home  
automation



lighting



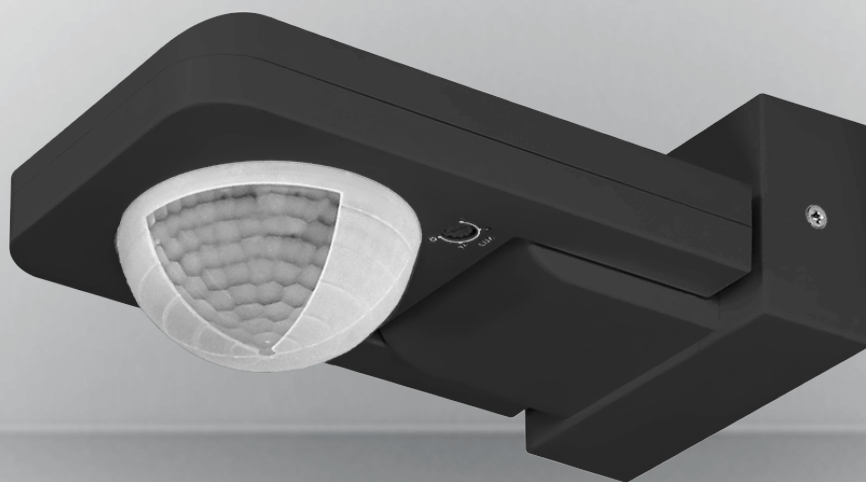
electric



furniture

**ORNO**<sup>®</sup>

LIVING INNOVATIONS



## DATA SHEET

### Motion and presence sensor, 360°, black

symbol: OR-CR-259/B

**Manufacturer:**  
ORNO-LOGISTIC Sp. z o.o.  
ul. Rolników 437, 44-141 Gliwice  
tel: 32 43 43 110  
www.orno.pl

ISBN 5900378653387



5 900378 653387 >

# The main features:

The motion sensor is designed for an automatic control of lighting or other electrical equipment. Triple system of sensors with detectors placed at a special angle provides control of the entire area. The device is suitable for use in large rooms, e.g.: warehouse halls, waiting rooms. The sensor is characterized by higher intelligence and greater accuracy, which allows detection of even the smallest movements. Potentiometers for regulation: lighting time and sensitivity of light intensity. The sensor collaborates with LED lighting.



TYPE OF SENSOR:  
infrared



DETECTION ANGLE:  
360 Grad



Adjustment of  
the light  
intensity (lux)



Adjustment of  
lighting time  
(time)



INSTALLATION:  
surface  
mounting

# Technical specifications:

## General Information

Type of sensor:	infrared
Detection angle:	360 Grad
The range of motion detection:	Ø20m
Power supply:	230V~, 50Hz
Max. load :	2000W

Protection rating: IP65

Colour: black

Adjustment of the light intensity (lux): ✓ yes

Light intensity adjustment range (lux): <3–2000lux

Adjustment of lighting time (time): ✓ yes

Lighting time adjustment range (time) : min: 10 sec. ± 3 sec.; max: 30 min. ± 2 min.

Adjustment of the range of motion detection (sens): ✗ no

Installation: surface mounting

Dimensions (width x height x depth [mm]): 172,5 / 56 / 86,5